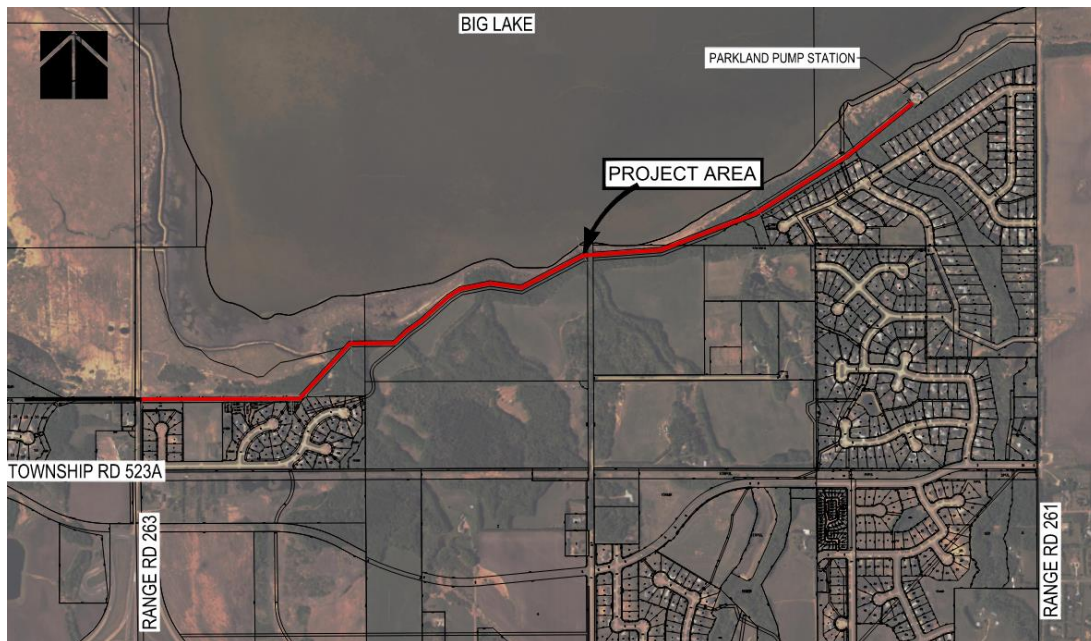


Parkland Gravity Sewer Rehabilitation

PROJECT DETAILS

The Alberta Capital Region Wastewater Commission (ACRWC) is rehabilitating the existing wastewater transmission sewer in its right-of-way located between the north end of Highway 60/Range Road 263 and our Parkland Pump Station, located at the north end of Range Road 261. Please refer to the following map:



Why is this project important?

The existing sewer is over 38 years old and will soon reach its expected service life. The ACRWC is proactively rehabilitating this 3 km section of the sewer, to extend its operational life so that it can continue to safely convey wastewater for treatment.

PROJECT TIMELINES

The rehabilitation will begin in September 2023 and use a trenchless method to minimize the construction footprint. The existing sewer line will be rehabbed using cured-in-place pipe (CIPP) methodology. The pipes will be lined with a resin 'sock' and area residents may notice a slight chemical smell during this stage of the process. This will only be temporary and is not harmful.



This project is part of an overall strategy to rehabilitate our sewer between Highway 44 and our Parkland Pump Station. A future phase is planned upstream (west of Highway 60) for this project.

WHAT TO EXPECT

Workspace

The construction work area is expected to be generally contained within the 20m width of the ACRWC's right-of-way. In some locations, additional temporary workspace from adjacent landowners may be required, and those impacted will be contacted directly.

Environmental Protection

A detailed Environmental Protection Plan (EPP) was prepared that identifies applicable legislation and regulatory requirements that apply to the project and provided suitable site-specific mitigation measures that were incorporated into construction planning. These measures have been incorporated into an Environmental Construction Operations (ECO) Plan and verified for compliance with the EPP.

As an environmental leader, the ACRWC is committed to following all applicable legislation and regulatory requirements. We are ISO 14001 certified for Environmental Management and we also hold this same high standard for contractors working on our behalf.

Trail Access

During the sewer measurement, some informal trails located along and adjacent to the ACRWC's right-of-way will be temporarily closed to public access to maintain a safe environment for both the public and workers. Signage will be placed at existing access points to notify the public of closures.

Hours of Work and Noise

Residents can expect increased construction traffic. Our team will comply with the Parkland County Community Standards bylaw for noise. Where it is necessary to exceed allowable noise levels on a temporary basis, prior approval and permits will be obtained from the County.

Safety

Work areas will be kept safe and secure and work will be conducted in accordance with Parkland County bylaws, Alberta Occupational Health and Safety Requirements, and the ACRWC's safety policies.



WHO IS THE ALBERTA CAPITAL REGION WASTEWATER COMMISSION?

Established in 1985, the ACRWC is a not-for-profit commission operating under the Municipal Government Act that provides wastewater transmission and treatment services to approximately 330,000 residents in 13 municipalities within the Edmonton Area.

FOR MORE INFORMATION

Please contact us at: info@acrwc.ab.ca or 780-467-8655